

MONTHLY MEMBERSHIP PROGRESS REPORT

LOCATION INDIA

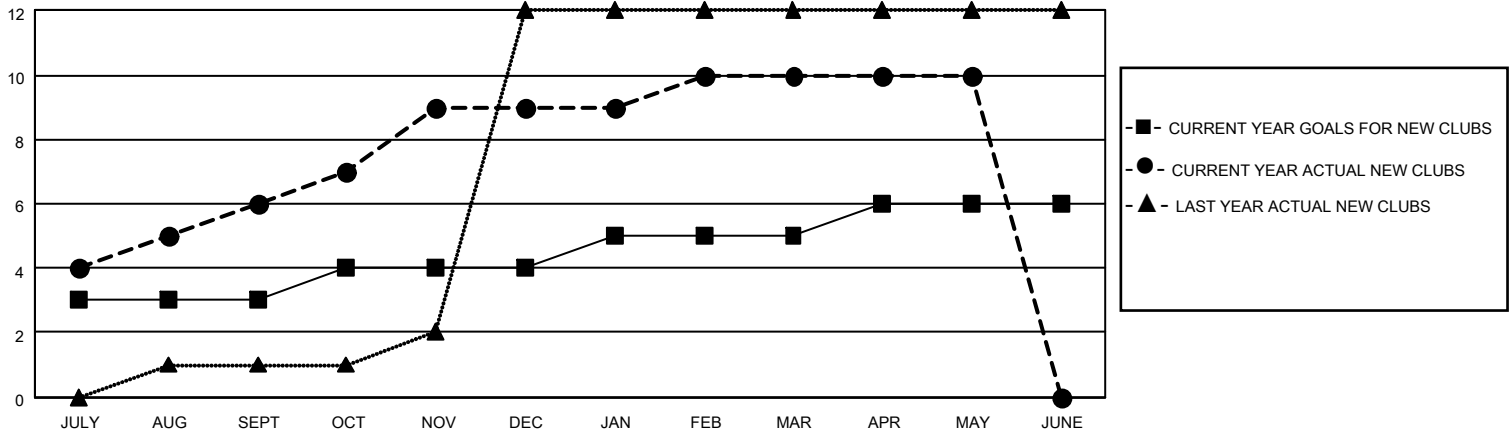
District 322 B2

Results as of: 5/31/2022

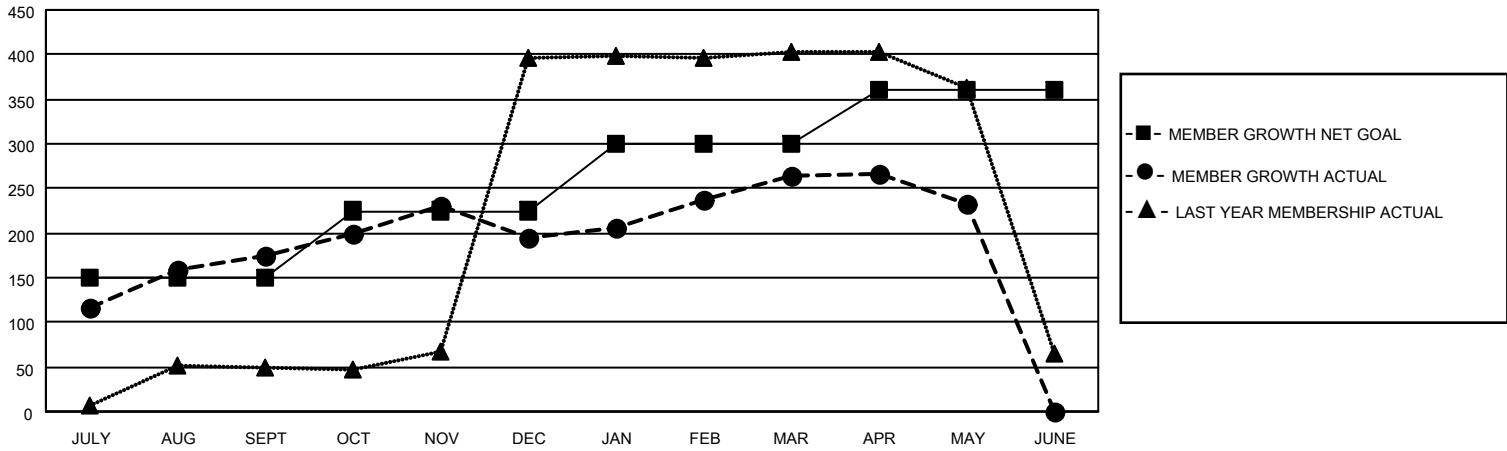
| Clubs | | | |
|-----------------------|---------------|-----------|---------------|
| RESULTS FOR 2021-2022 | | | |
| QUARTER | NEW CLUB GOAL | NEW CLUBS | DROPPED CLUBS |
| JULY/AUG/SEPT | 3 | 6 | 1 |
| OCT/NOV/DEC | 1 | 3 | 1 |
| JAN/FEB/MAR | 1 | 1 | 1 |
| APR/MAY/JUNE | 1 | 0 | 0 |

| Members | | | |
|-----------------------|------------------------|----------------------|---|
| RESULTS FOR 2021-2022 | | | |
| QUARTER | MEMBER GROWTH NET GOAL | MEMBER GROWTH ACTUAL | DROPPED MEMBERS ACTUAL (including transfers) |
| JULY/AUG/SEPT | 150 | 264 | 77 |
| OCT/NOV/DEC | 75 | 93 | 71 |
| JAN/FEB/MAR | 75 | 93 | 21 |
| APR/MAY/JUNE | 60 | 32 | 62 |

GOALS AND ACTUAL NEW CLUBS CUMULATIVE



GOALS AND ACTUAL MEMBERS CUMULATIVE



DROPPED CLUBS: 3

48 CLUBS OF 98 ADDED 1 OR MORE NEW MEMBERS

GENDER DISTRIBUTION

| | |
|----------------------|----------------|
| MALE | 2,068 (68.86%) |
| FEMALE | 935 (31.14%) |
| NON BINARY | 0 (0.00%) |
| PREFER NOT TO ANSWER | 0 (0.00%) |

DROPPED MEMBERS

[CLICK HERE FOR CUMULATIVE MEMBERSHIP DATA](#)

| | |
|----------------|------------|
| DECEASED | 10 |
| CLUB CANCELLED | 42 |
| OTHER | 179 |
| TOTAL | 231 |

TOTAL FAMILY UNIT MEMBERS 1,587

FAMILY MEMBERS PAYING HALF DUES 1,017